



The Bear of Rodborough Croquet Club

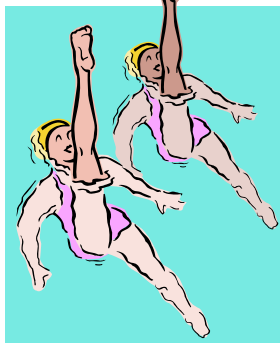
March 2010
Newsletter

Coaching

A reminder of Don's two coaching sessions on **16th and 23rd March**. Held at RDS offices, at 7.30p.m., we are asked to take pen and paper and a copy of the laws book if we have one.

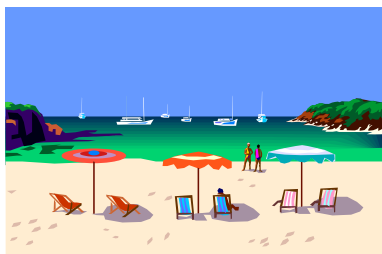
.....

Jersey 2010.



So far 13 Bears have signed up for this jolly (8 playing and 5 social supporters) and may be interested in the following information:

The main **Tourism** website is www.jersey.com.



Bus routes and Timetables are available from www.mybus.je

An **Island Explorer Bus Pass** giving unlimited travel costs £6.50 for 1 day, £10.85 for a weekend, £16.25 for three days, £23.85 for 5 days. Buses from the airport to St Helier run every 20 minutes.

From the airport, you can buy a One Day Pass for £6.50 on the bus and then when you reach St Helier bus station, you can trade that in (full refund) for a weekend, 3 or 5 day pass. Stroud Bus Passes are not acceptable on Jersey – I asked!

If you plan visiting a lot of attractions, you may be interested in **The Jersey Pass** which costs £32 for 2 days, £24 for 4 days or £59 for 6 days and can be purchased in advance on www.jerseypass.com. It will get you into many attractions free and may be worthwhile if you are staying for a week. (They currently have a winter sale with prices less than those shown above.)

Parking. For those taking/hiring cars, parking in St Helier and some other parts of the island (where the signs indicate) has to be prepaid. Paycards can be purchased from many outlets but not in the car parks themselves. Details from Jersey Tourism.



Theatre –

www.jerseyoperahouse.co.uk has a terrific and very varied spring season but the summer programme is not yet on line.

.....

League matches

Intermediate Central (manager – Paul)

| | |
|-----------------------------|-------------------------|
| Saturday 24th April | Home to Bath |
| Sunday 9th May | Away to Nailsea Central |
| Saturday 22nd May | Away to Bristol |
| Sunday 4 th July | Away to Wellington |
| Sunday 18th July | Home to Taunton Deane |

Intermediate North (manager – Brian)

| | |
|------------------|--------------------------|
| Sunday 9th May | Away to Broadwas |
| Sunday 16th May | Home to Worcester Norton |
| Sunday 20th June | Home to Swindon |
| Sunday 11th July | Away to Dyffryn |

Federation North (manager – Matthew)

| | |
|--------------------|-------------------------|
| Sunday 25th April | Home to Nailsea North |
| Saturday 15th May | Away to Swindon |
| Sunday 23rd May | Home to Cheltenham |
| Sunday 4th July | Home to Kington Langley |
| Saturday 17th July | Away to Dyffryn |

Parkstone Qualifier (manager – Don)

| | |
|---------------------|------------------------|
| Saturday 24th April | Away to Cedar Park |
| Sunday 9th May | Home to Nailsea 2nd |
| Saturday 5th June | Away to Cheltenham 2nd |
| Sunday 27th June | Away to Sidmouth |
| Sunday 11th July | Home to Budleigh |

Fancy something different?

For a little fun and pre-match practice, you may like to take up Cheltenham's invitation to enter their first Pro-Am Charity Day. Entries are invited from novices (Ams) and experienced players (Pros) for a day of light-hearted games on **Sunday 11th April**. Perhaps we could take a car load of Bears and if you are interested, please let Robert know immediately as the final date for entries is imminent. Entrants are invited to make a donation (£5 suggested) which will be given to local charities (this is half the price of a day's green fees under normal circumstances). Refreshments and a barbecue will be available.

New Season. The weather and lawn condition will determine when we are able to start play but we hope it will be as soon as the clocks change. Confirmation will be by email nearer the time.

Snooker. As the season nears its climax, the leading contenders jockey for position to claim the trophy.

Start the new season with new kit?



Time for a new white polo shirt? Jaded sweatshirt? Droopy hat? White trousers taken on that grey look? Measurements changed since last season? Want to look like our immaculate models?

If you would like some new corporate gear for the start of the new season, John will be ordering soon so that stock can be delivered before the first match. Prices depend on the size of order – the larger the order, the cheaper each unit price, so the prices shown below are only a guide. Ladies sizes: 10, 12, 14, 16, 18, 20. Men's sizes: S = 38", M = 40", L = 42", XL = 44", XXL = 46-48".

Please email John joncolmunro@aol.com to let him know if you would like:

Sweatshirts at £15.22 or less

Polo shirts at £14.05 or less

and this season's specials:

Baseball caps - plain white at £4.64, or with Bear logo at £10.52

Club umbrellas – red and white golf umbrellas with our logo (ideal for summer shade or spring showers) at £12.87

White trousers and shorts are available from the CA shop: £30 and £26 respectively.

www.oxfordcroquet.com

For those of you that have not yet discovered this wonderful site, it gives a vast amount of coaching and tactical hints and information. It is designed for everyone from the complete novice to world class players and is a source of endless fascinating advice.

Your copy of **SWAN (South West Area Newsletter)** will be available at Don's first coaching evening. Thereafter, they will be available in the pavilion from Opening Night onward.

.....
Pub nights.

The final pub night is on **Wednesday 10th March** at The Britannia, Nailsworth. Look out for tokens in the local press though these are generally limited to two per table.

.....
Club matches can start as soon as the lawn is available and Don will be sending out the draw shortly. Please arrange the games as soon as you can so that potential problems encountered due to holidays do not fowl up the system.

.....
New Balls.

At vast expense, we have bought a new set of Dawson Balls which will be our primary colours. The old set is to be painted with stripes and will become our third colours. This means that all three sets of our main balls will have the same playing characteristics. The old stripy balls will now be used for teaching purposes.

CA Golf Doubles Tournament. 12th/13th June. A reminder that club members are invited to enter this tournament and Don is eager to receive your applications. Entry is £8 per player. If you have not tried your hand at tournament play yet, this could be the perfect introduction. It is great fun.

.....
Exciting plans for Minchinhampton.

A ten acre field in Minchinhampton is available for purchase and the Parish Council is keen to acquire this for the community. They are inviting suggestions for possible uses and are holding a public consultation meeting on 27th and 28th March at Minchinhampton Primary School from 10.00 a.m. There are already many organisations with their own plans but the club will be making representations to suggest creating two full-sized croquet lawns. It is important that the council understands how much interest there may be in such a facility. Therefore, can we appeal to all of you to visit this consultation meeting to voice your support for our proposal.

.....
STOP PRESS

1. If you have not yet given the managers your availability for matches, please can you do so as a matter of urgency. They need to get their teams organised now to avoid clashes with other tournaments.

2. The Year's diary is printed below.

.....
For more information:

Our Club Website- <http://www.faydon.com/Bear/Bear.html>
Croquet Association (of which the club is a member) -www.croquet.org.uk
South West Federation of Croquet Clubs (to which we are affiliated) – <http://www.swfcroquet.org.uk>

.....
The Bear of Rodborough Croquet Club.

| | | |
|--|----------------|--------------|
| Chairman and Hotel Liaison: | Robert Moss | 01453 872386 |
| Secretary: | Rosemary Danby | 01453 872456 |
| Treasurer: | Brian Pittaway | 01453 860610 |
| Handicapper and club competitions manager: | Don Gaunt | 01453 822507 |
| Lawn Manager: | Nick Hurst | 01453 882960 |
| Equipment Manager: | Richard Danby | 01453 872456 |
| Webmaster: | Don Gaunt | 01453 822507 |

6. Help! What do I do now?

This article is printed on its own page in case you want to cut out and keep it.

It is the start of the game. I chose to play with blue and black.

In the first turn of the match, I played blue. My opponent then played black. What happens now?

Firstly, the black ball is removed from the court. Then the correct ball (either red or yellow) is placed on any point of either Baulk-Line of the opponent's choosing and his TURN ENDS. [Law 26 (a) (2)]

If he has a bisque, he is entitled to use it at this point (if he is quite mad!) but clearly has to play the same ball.

At the start of your second turn, you play black from wherever you like on either baulk!!! This can include taking croquet immediately from red (or yellow) *Think about it!*

A different situation.
In the excitement of the moment, although I chose to play with blue and black, in my first turn I played red, my opponent played black, I played yellow and then my opponent realised that he could not play his fourth ball because it was already on the lawn.

What happens now?

The game is restarted using correct colours.

[Law 26(b)]

And what about if all four balls have been played wrongly?

If spotted before the start of the fifth turn, the game is restarted as above BUT if the first stroke of the fifth turn has been played, AND every one of the four balls had been played in a logical order, the choice of balls is reversed and the game proceeds accordingly.

[Law 26 (c)]



2010 Programme.

January

| | | |
|----------------------|-----------|---------------------------------|
| Thurs 7th | 7.00 p.m. | Snooker |
| Wed 13th | 7.00 p.m. | Pub Night - Half Way House |
| Thurs 21st | 7.00 p.m. | Snooker |
| Sat 30 th | 7.00 p.m. | Annual Dinner at The Bear Hotel |

February

| | | |
|-----------------------|-----------|----------------------------------|
| Thurs 4 th | 7.00 p.m. | Snooker |
| Wed 10th | 7.00 p.m. | Pub Night – Woolpack, Stonehouse |
| Thurs 18th | 7.00 p.m. | Snooker |

March

| | | |
|---|-----------|--|
| Thurs 4th | 7.00 p.m. | Snooker |
| Wed 10th | 7.00 p.m. | Pub Night – Britannia, Nailsworth |
| Tuesday 16 th | 7.30 p.m. | Coaching at RDS |
| Thurs 18 th | 7.00 p.m. | Snooker |
| Tuesday 23 rd | 7.30 p.m. | Coaching at RDS |
| (28th Summer time begins) | | |
| Tues 30th | 7.00 p.m. | Final Snooker Night and presentation |
| Wed 31st | 6.00p.m. | Opening Club Night – subject to weather/lawn condition |

April

| | | |
|--------------------------------|--|--|
| (4th Easter) | | |
| Sunday 11 th | | Visit to Cheltenham Pro-Am Day |
| Saturday 24th | | Intermediate Central Home to Bath |
| Saturday 24th | | Parkstone Qualifier Away to Cedar Park (Bristol) |
| Sunday 25th | | Federation Home to Nailsea North |

May

| | | |
|---------------|--|--|
| Sunday 9th | | Intermediate Central Away to Nailsea Central |
| Sunday 9th | | Intermediate North Away to Broadwas |
| Sunday 9th | | Parkstone Qualifier Home to Nailsea 2nd |
| Saturday 15th | | Federation Away to Swindon |
| Sunday 16th | | Intermediate North Home to Worcester Norton |
| Saturday 22nd | | Intermediate Central Away to Bristol |
| Sunday 23rd | | Federation Home to Cheltenham |

June

| | | |
|---------------------------|-----------|--|
| Saturday 5th | | Parkstone Qualifier Away to Cheltenham 2nd |
| Sat/Sun 12/13 | 9.30a.m. | C.A. Golf Tournament |
| Sunday 20th | | Intermediate North Home to Swindon |
| Saturday 26 th | 7.00 p.m. | Barbecue at Keith and Kate's |
| Sunday 27th | | Parkstone Qualifier Away to Sidmouth |

July

| | | |
|---------------------------|--|--|
| Sunday 4th | | Intermediate Central Away to Wellington |
| Sunday 4 th | | Federation Home to Kington Langley |
| Sunday 11th | | Intermediate North Away to Dyffryn |
| Sunday 11th | | Parkstone Qualifier Home to Budleigh |
| Saturday 17th | | Federation Away to Dyffryn |
| Sunday 18th | | Intermediate Central Home to Taunton Deane |
| Friday 30 th – | | Summer Jolly - Weekend trip to Jersey |

August

| | | |
|---------------|--|---------------------------------------|
| Sun 1st | | Summer Jolly - Weekend trip to Jersey |
| Sat/Sun 28/29 | | Visit from Llanfairfechan CC |

 **September**

Sun 12th 11.00a.m. Club Golf Tournament Finals

 **October**

Wed 27th 7.00p.m. AGM

TBC Wed 7.00 p.m. Snooker

(31st Summer time ends)

 **November**

TBC Wed 7.00 p.m. Snooker

TBC Wed 7.00p.m. Pub Night– venue

TBC Wed 7.00 p.m. Snooker

 **December**

TBC Wed 7.00 p.m. Pub Night – venue

TBC Wed 7.00 p.m. Snooker

TBC Wed 7.00 p.m. Snooker

Club nights this year will be:

Mondays – coaching and golf croquet

Wednesdays – Association croquet